



SAN FRANCISCO HIV COMMUNITY PLANNING COUNCIL CLINICAL QUALITY IMPROVEMENT PROGRAM

John Aynsley

HIV Health Services

San Francisco Department of Public Health

June 27, 2022

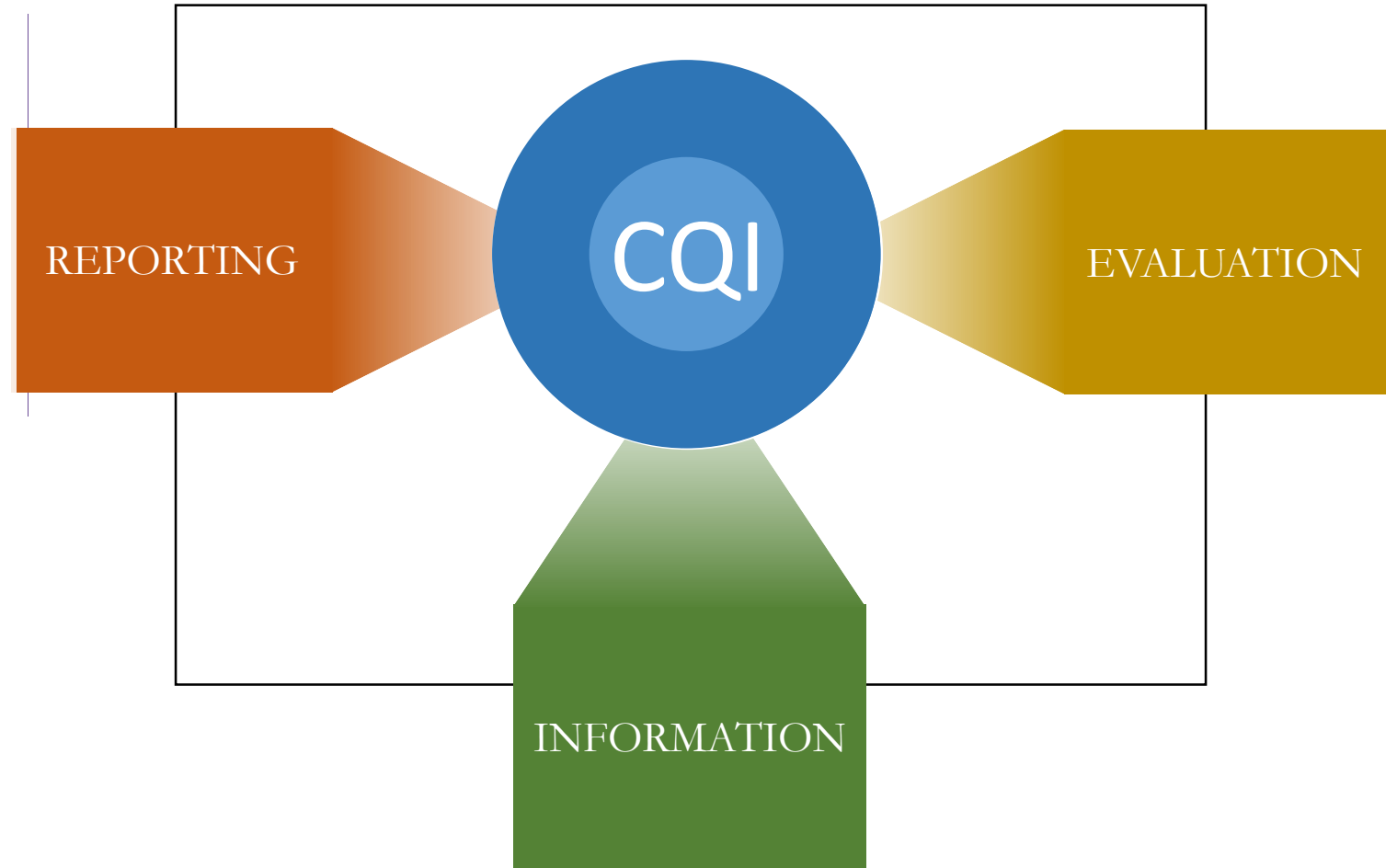


Table of Contents

- 1. Purpose, Goals, Activities**
- 2. Considerations & Measures**
- 3. Data Overview & Analysis**
- 4. Questions & Comments**



1. *Purpose*, Goals, Activities — Stakeholders & Overview



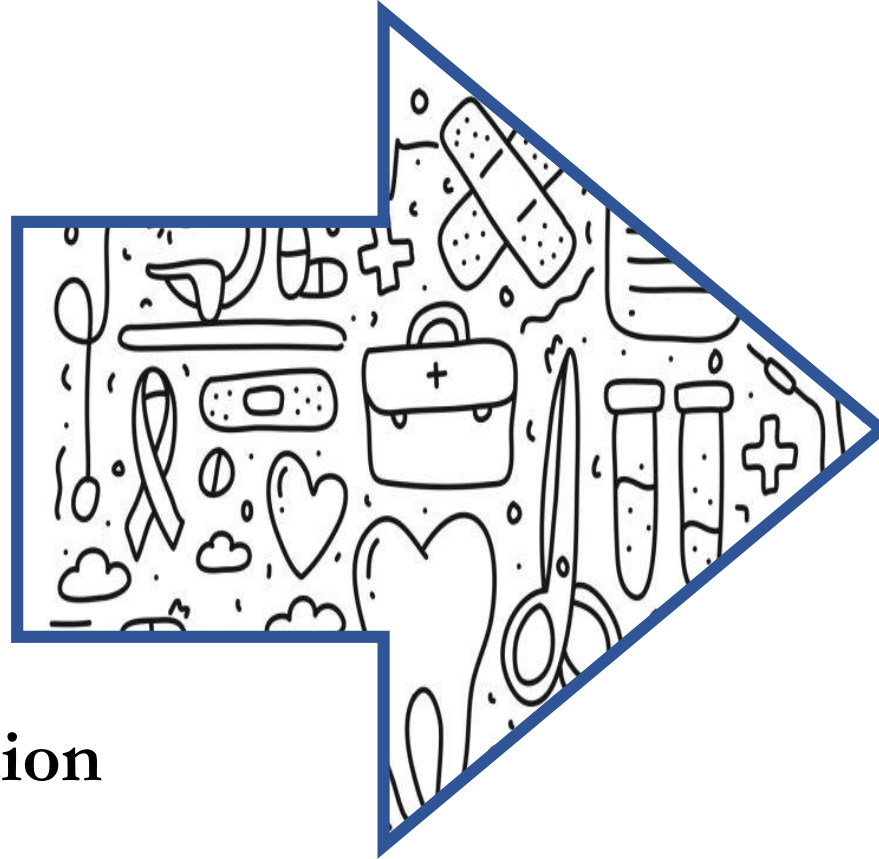
1. Purpose, *Goals*, Activities – Outcomes



- ➔ **Analyze Key HRSA Quality Indicators For San Francisco**
- ➔ **Utilize Data to Improve Quality of Care & Health Outcomes**
- ➔ **Report to Federal, State, and Local Funders on HIV Health Indicators**
- ➔ **Used for Individual Program Performance Evaluation**

1. Purpose, *Goals*, Activities — Data Integration

Epic



Improved Integration

=

Improved Clinical Outcomes

1. Purpose, Goals, *Activities* – Recent HHS CQI Work

- Data Collection Improvements
- Improving Viral Suppression in All Clients
- Increasing Viral Load Suppression Rates in the Black & African American Community
- Increasing Viral Load Suppression Rates in Persons Experiencing Homelessness or Unstable Housing
- Ongoing Trainings on a Variety of Topics



2. Considerations & Measures — Key Indicators

Quality Assurance Performance Measures

> Retention in Care

% of clients with a medical visit in the first half of the year and the second half of the year

> ART Prescription

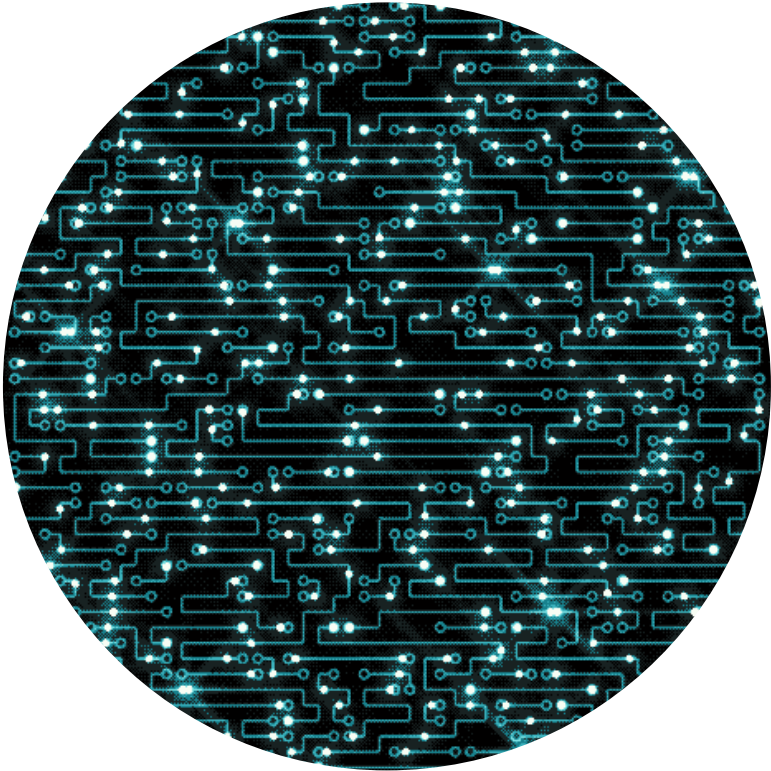
% of clients who are prescribed ART

> Viral Load Suppression

% of clients with a viral load test result of <200



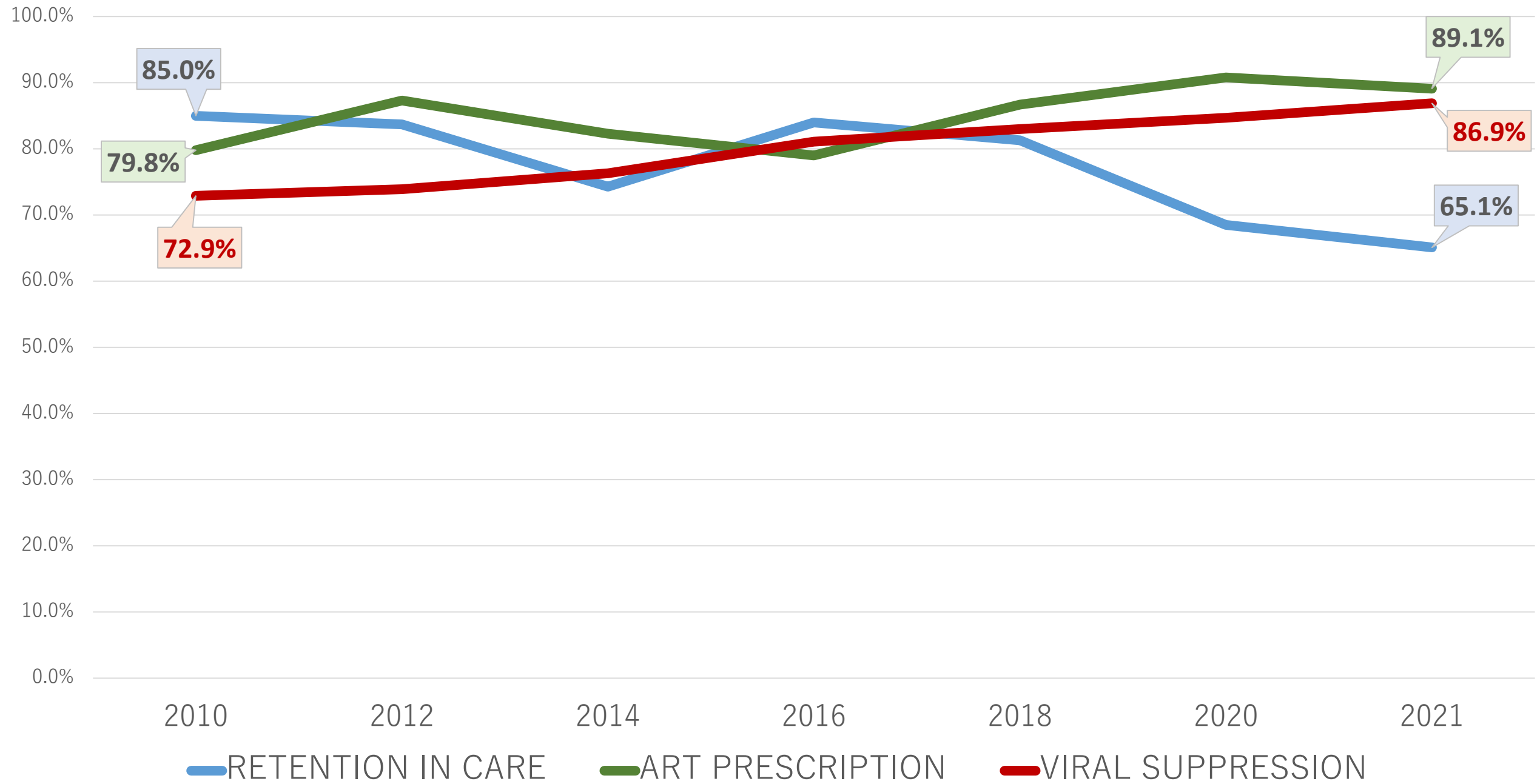
3. Data Overview & Analysis – Data Parameters



- Data is from the ARIES Database
- Data was pulled during the week of June 12-17, 2022
- Data evaluation date range is January - December
- Presentation is designed to address CQI thresholds, not to compare models of care

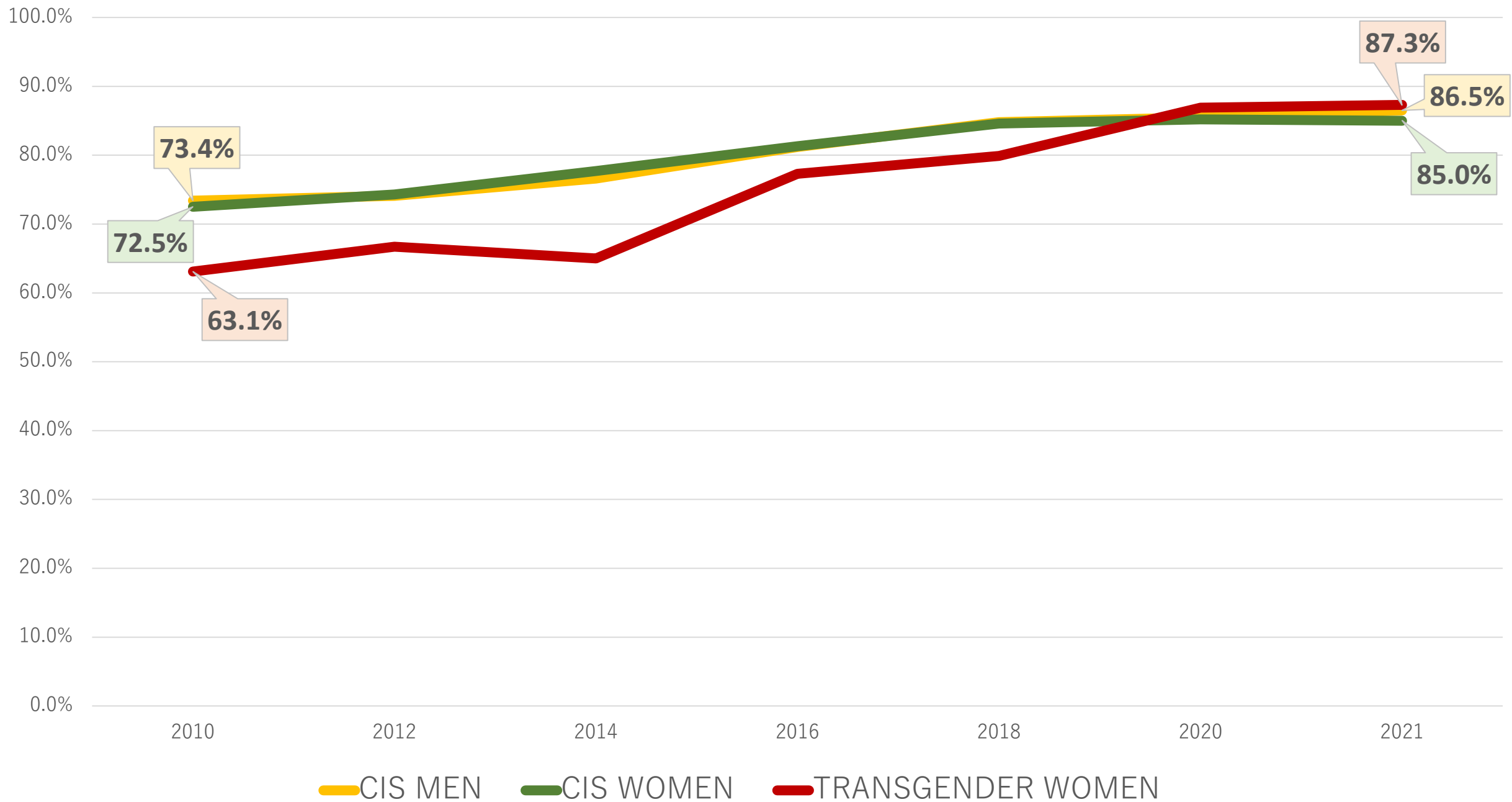
HIV CQI MEASURES	2010	2012	2014	2016	2018	2020	2021
RETENTION IN CARE	3,086	3,220	2,802	3,552	3,412	2,750	3,225
	85.1%	83.7%	74.3%	84.0%	81.3%	68.5%	65.1%
ART PRESCRIPTION	3,608	3,789	3,292	3,981	3,897	3,289	3,379
	79.8%	87.3%	82.3%	79.0%	86.7%	90.8%	89.1%
VIRAL SUPPRESSION	6,155	6,256	5,898	5,918	5,710	5,099	5,860
	73.5%	75.7%	79.8%	81.8%	83.5%	85.5%	86.9%

SAN FRANCISCO – HIV CQI MEASURES



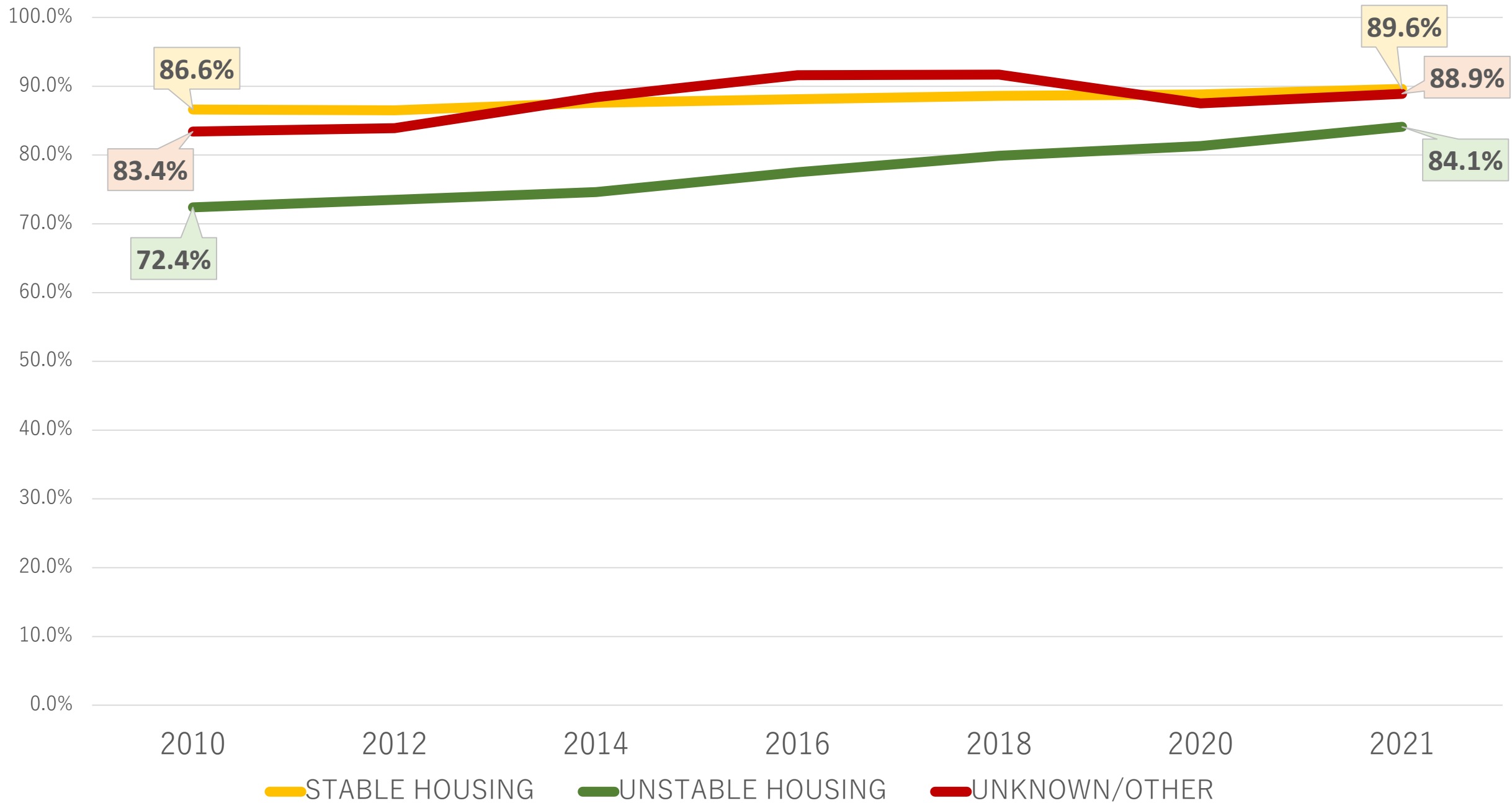
Viral Suppression GENDER IDENTITY	2010	2012	2014	2016	2018	2020	2021
CIS MEN	5,157	5,197	4,856	4,932	4,827	4,259	4,289
	73.4%	74.1%	76.6%	81.2%	84.8%	85.6%	86.5%
CIS WOMEN	717	724	667	688	648	580	581
	72.5%	74.3%	77.7%	81.3%	84.6%	85.2%	85.0%
TRANSGENDER WOMEN	203	201	200	238	248	260	268
	63.1%	66.7%	65.0%	77.3%	79.9%	86.9%	87.3%

VIRAL SUPPRESSION – GENDER IDENTITY

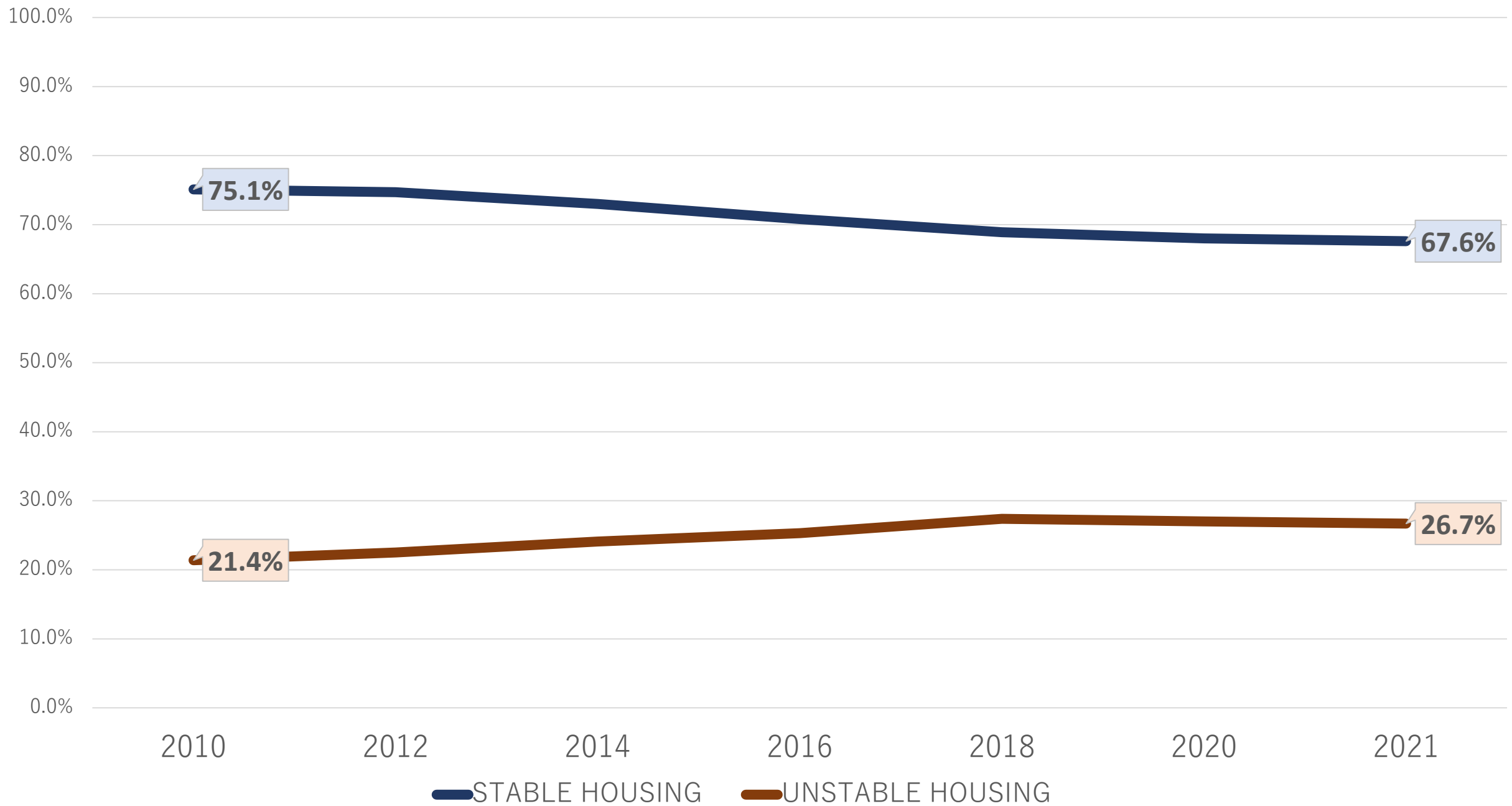


Viral Suppression LIVING SITUATION	2010	2012	2014	2016	2018	2020	2021
STABLE HOUSING	4,366	4,576	4,244	4,132	3,892	3,467	3,419
	86.6%	86.5%	87.6%	88.1%	88.6%	88.8%	89.6%
UNSTABLE HOUSING	1,244	1,381	1,400	1,478	1,550	1,376	1,349
	72.4%	73.5%	74.6%	77.5%	79.9%	81.3%	84.1%
UNKNOWN / OTHER	314	361	352	418	386	399	432
	83.4%	83.9%	88.4%	91.6%	91.7%	87.5%	88.9%

VIRAL SUPPRESSION – HOUSING STATUS



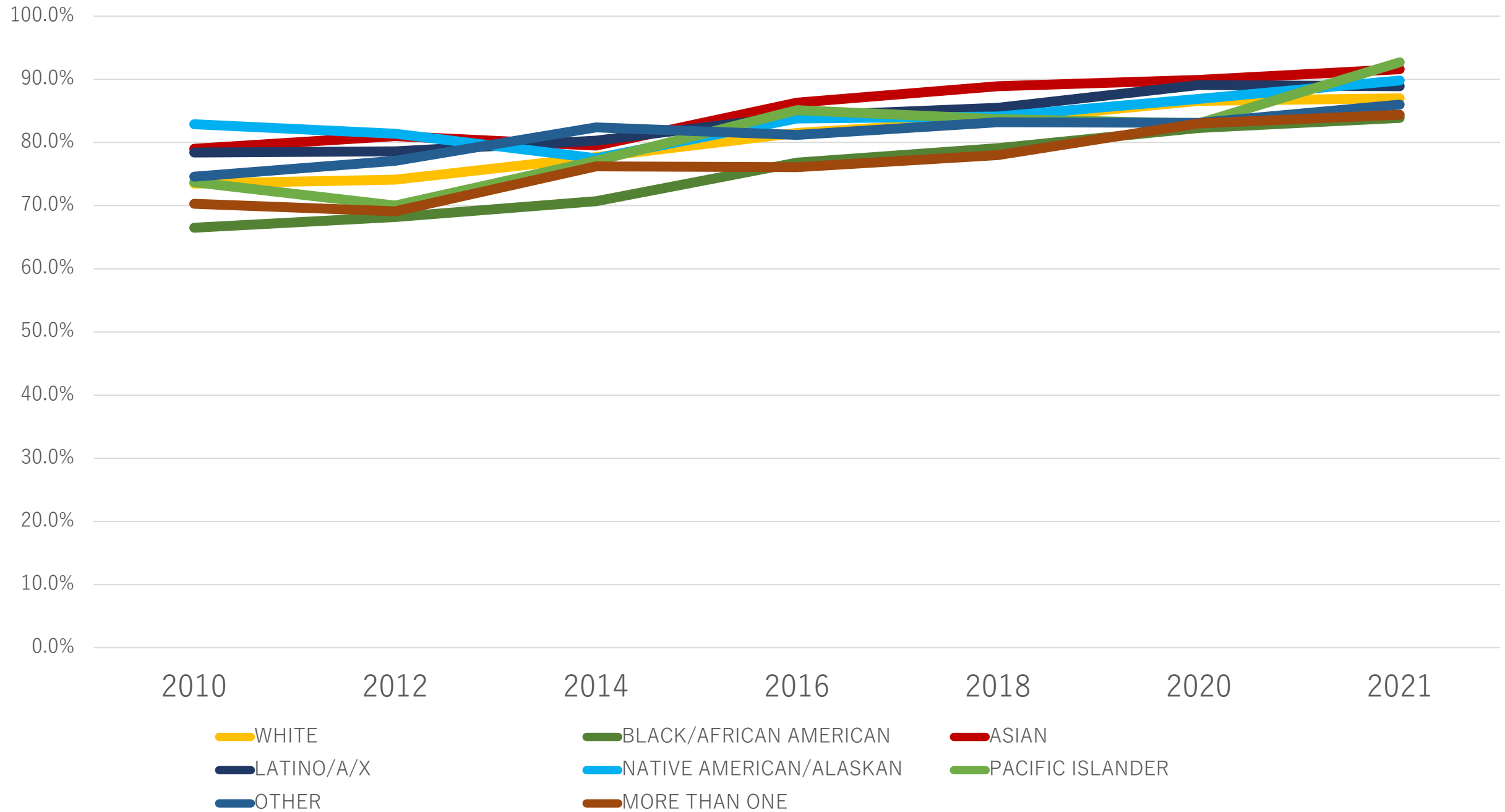
HOUSING STATUS



RACE / ETHNICITY	2010	2012	2014	2016	2018	2020	2021
WHITE	3,332	3,422	3,177	3,164	3,066	2,950	2,829
	73.5%	74.1%	77.7%	81.5%	83.5%	86.6%	87.0%
BLACK / AFRICAN AMERICAN	1,387	1,387	1,336	1,377	1,314	1,101	1,107
	66.5%	68.2%	70.7%	76.8%	79.1%	82.3%	83.9%
ASIAN	338	347	346	379	386	367	359
	79.0%	81.0%	79.5%	86.3%	88.9%	89.9%	91.6%
LATINO/A/X	1,372	1,442	1,344	1,465	1,566	1,289	1,341
	78.4%	78.6%	80.3%	84.2%	85.5%	89.1%	88.9%

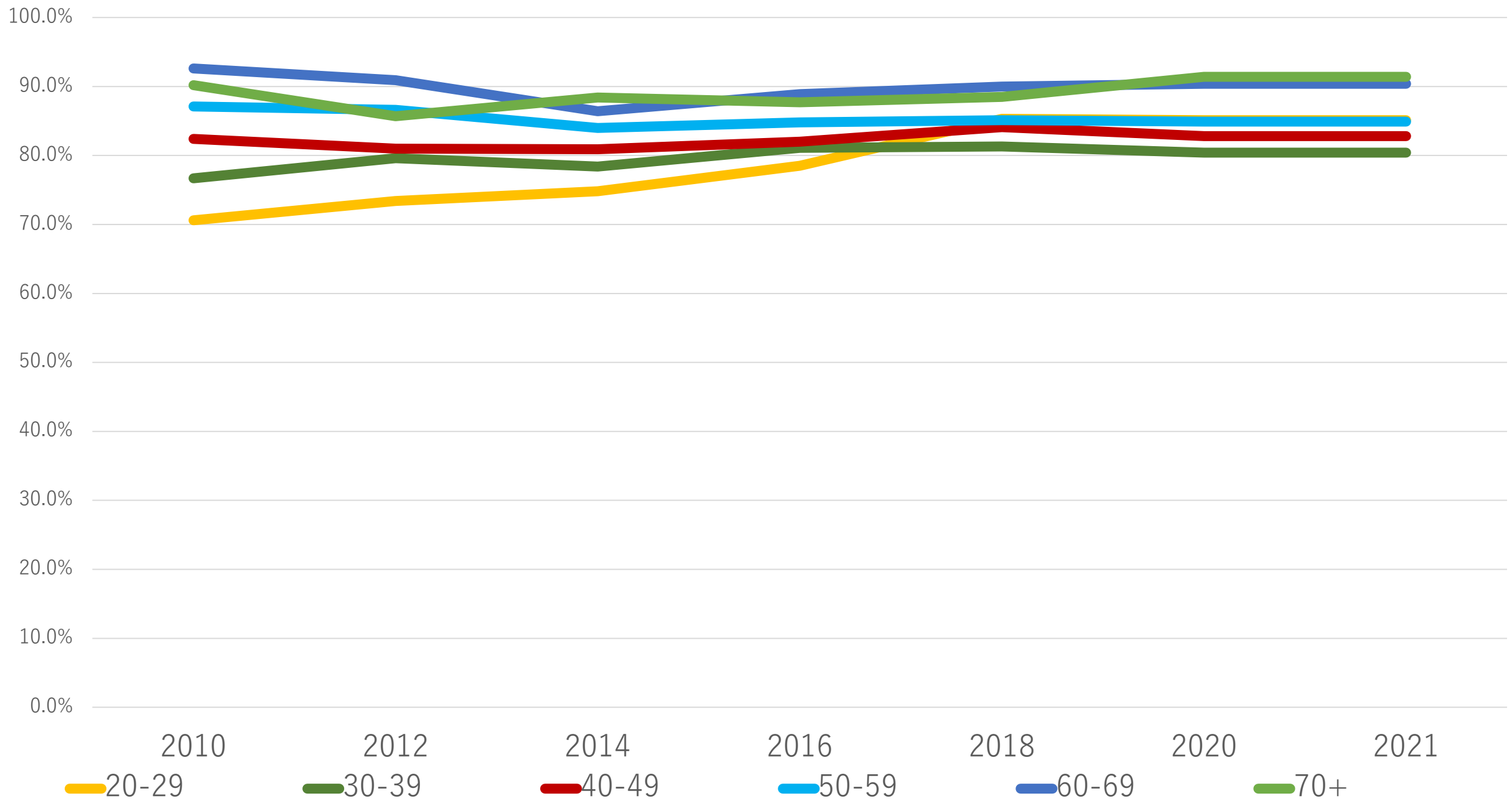
RACE / ETHNICITY	2010	2012	2014	2016	2018	2020	2021
NATIVE AMERICAN / ALASKAN	181	188	173	191	189	130	127
	82.9%	81.4%	77.5%	83.8%	84.1%	86.9%	89.8%
PACIFIC ISLANDER	57	50	48	47	43	47	41
	73.7%	70.0%	77.1%	85.1%	83.7%	83.0%	92.7%
OTHER	677	607	552	559	549	504	678
	74.6%	77.1%	82.4%	81.2%	83.2%	83.1%	86.0%
MORE THAN ONE	212	249	252	272	255	229	257
	70.3%	69.1%	76.2%	76.1%	78.8%	83.0%	84.4%

VIRAL SUPPRESSION – RACE/ETHNICITY

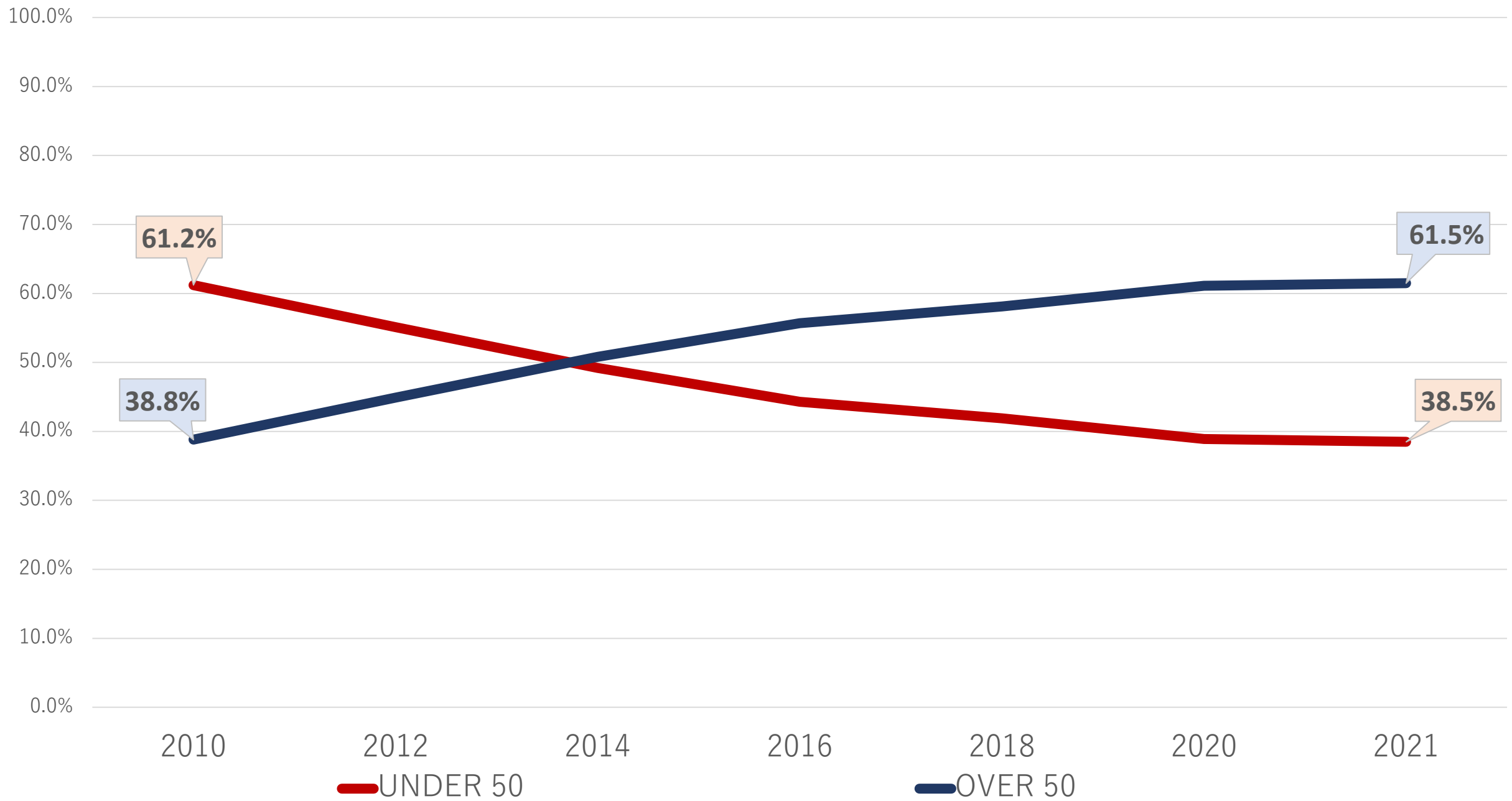


AGE RANGE BY DECADE	2010	2012	2014	2016	2018	2020	2021
20-29	360	384	345	354	319	222	215
	70.6%	73.4%	74.8%	78.5%	85.3%	85.1%	86.5%
30-39	926	913	842	866	916	790	810
	76.7%	79.6%	78.4%	81.1%	81.3%	80.4%	83.0%
40-49	2,255	2,072	1,667	1,354	1,126	944	920
	82.4%	81.0%	80.9%	82.0%	84.1%	82.8%	85.7%
50-59	1,725	1,969	1,980	2,071	1,887	1,627	1558
	87.1%	86.6%	84.0%	84.8%	85.1%	84.9%	87.5%
60-69	470	689	839	983	1,155	1,120	1188
	92.6%	90.9%	86.4%	88.9%	90.0%	90.4%	92.2%
70+	51	84	129	187	235	325	365
	90.2%	85.7%	88.4%	87.7%	88.5%	91.4%	92.3%

VIRAL SUPPRESSION – AGE RANGE



AGE OF CLIENTS OVER TIME



THANK YOU



QUESTIONS, COMMENTS, FEEDBACK

John.aynsley@sfdph.org