

Ending the Epidemics

HCPC Meeting

January 23, 2023

Thomas Knoble, MSW
Community Health Equity &
Promotion Branch, SFDPH

Today's Agenda

2



- Background Federal, State,
- SF Approach
 - Intergration and Collaboration
 - Coordination / Comunicacion
 - DPH Staff Roles
 - Leadership, Steering and CAP Meetings
- Next Steps / Future State

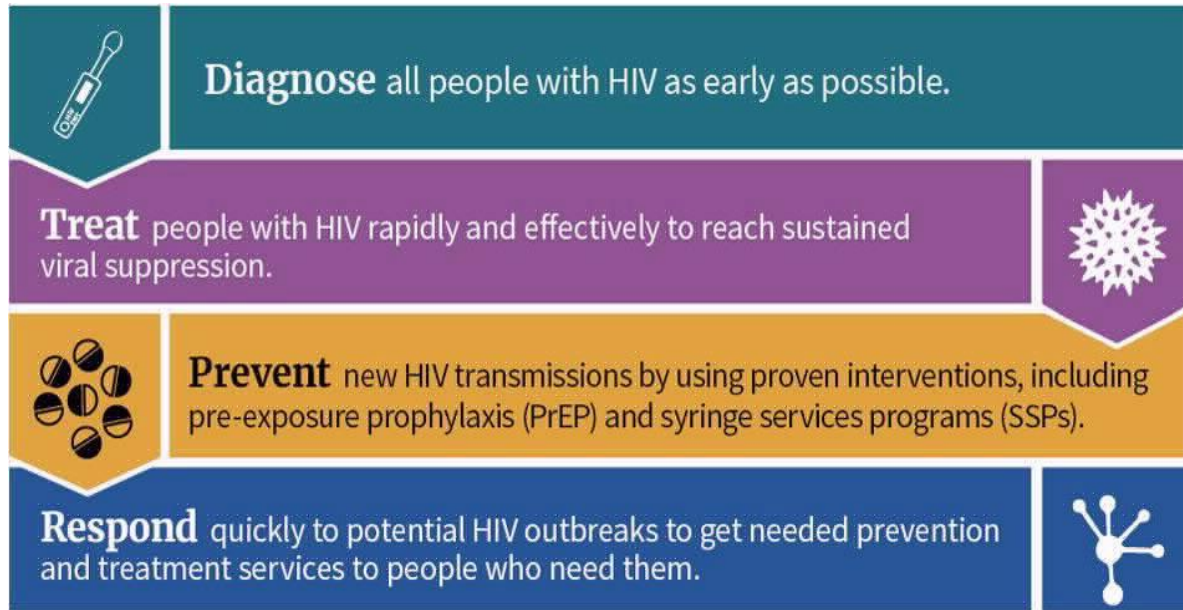


POPULATION HEALTH DIVISION
SAN FRANCISCO DEPARTMENT OF PUBLIC HEALTH

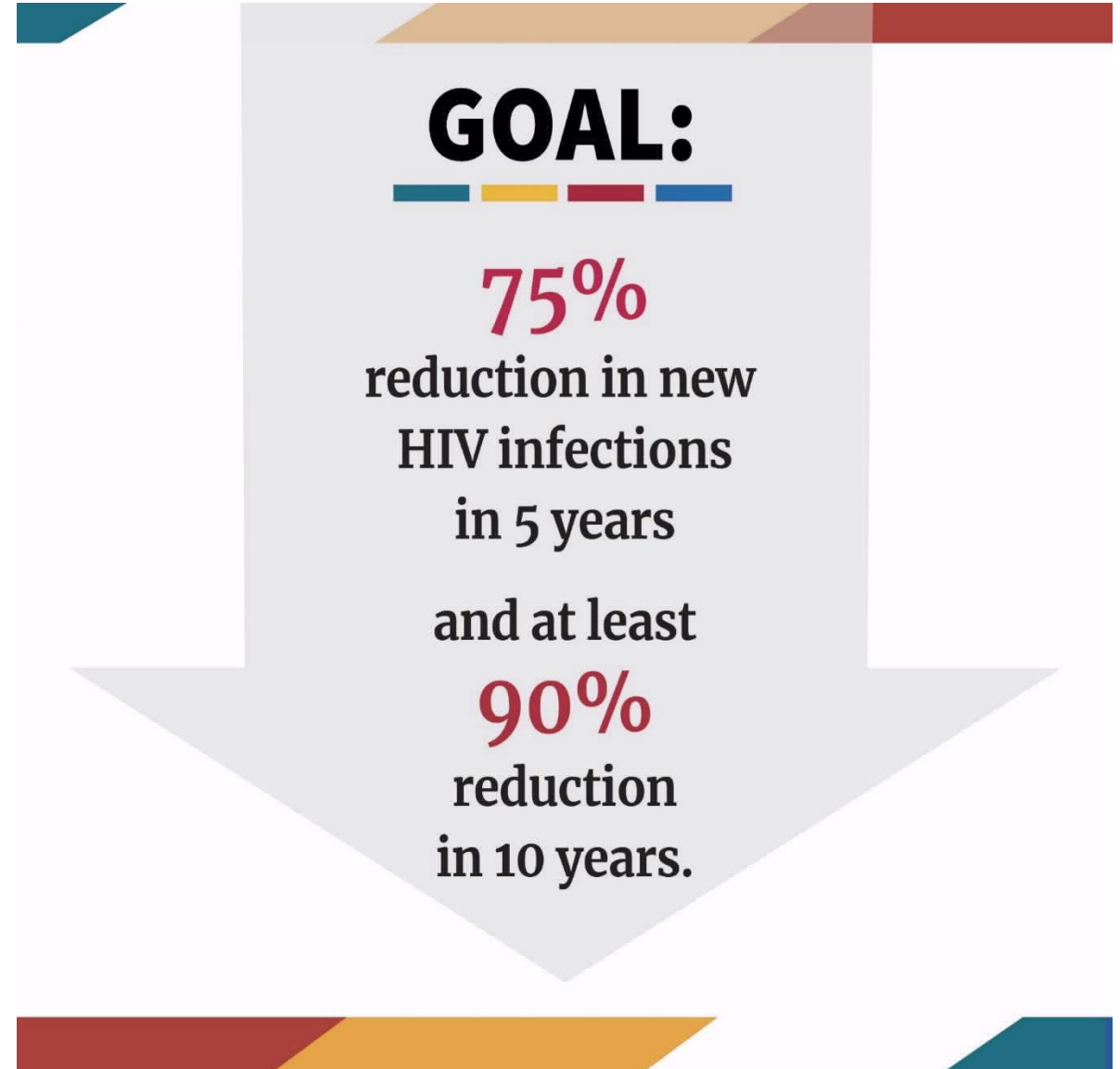
Federal Background



Federal Ending The HIV (HCV/STI) Epidemic(s)



This **10-year initiative** beginning **FY 2020** seeks to achieve the important goal of **reducing new HIV infections** in the United States to **less than 3,000 per year by 2030**.





EHE
and
ETE

**Similar yet
Different**



POPULATION HEALTH DIVISION
SAN FRANCISCO DEPARTMENT OF PUBLIC HEALTH

FEDERAL ETE FUNDING

\$291M FY-2020 ETHE Funding	\$170M Additional Other HIV Funding beyond ETHE
CDC – \$140M	HRSA MAI - \$54M
HRSA HAB Ryan White - \$70M	SAMHSA MAI - \$116M
HRSA Health Clinics - \$50M	
Indian Health - \$25M	
NIH - \$6M	

The **first phase** of the **initiative** will focus on **48 counties, Washington DC, San Juan, Puerto Rico, and 7 states** with a substantial **rural HIV burden**



New Additional Funds "To Implemented Disruptive Intervention"



California Background



ETE California



California ETE

- Alameda County
- Los Angeles County
- Orange County
- Riverside County
- Sacramento County
- San Bernadino County
- San Diego County
- San Francisco City/County

California drought status

December 27, 2022

January 3, 2023

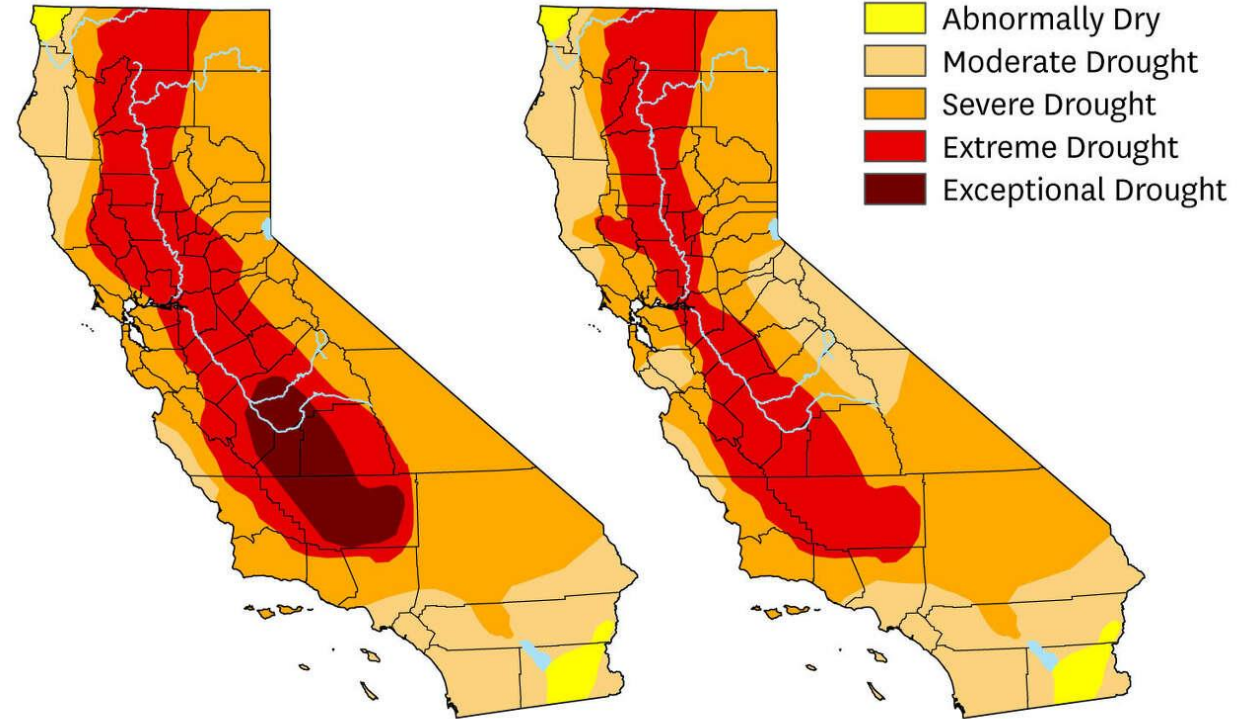


Chart: John Blanchard / The Chronicle • Source: U.S. Drought Monitor

San Francisco Approach

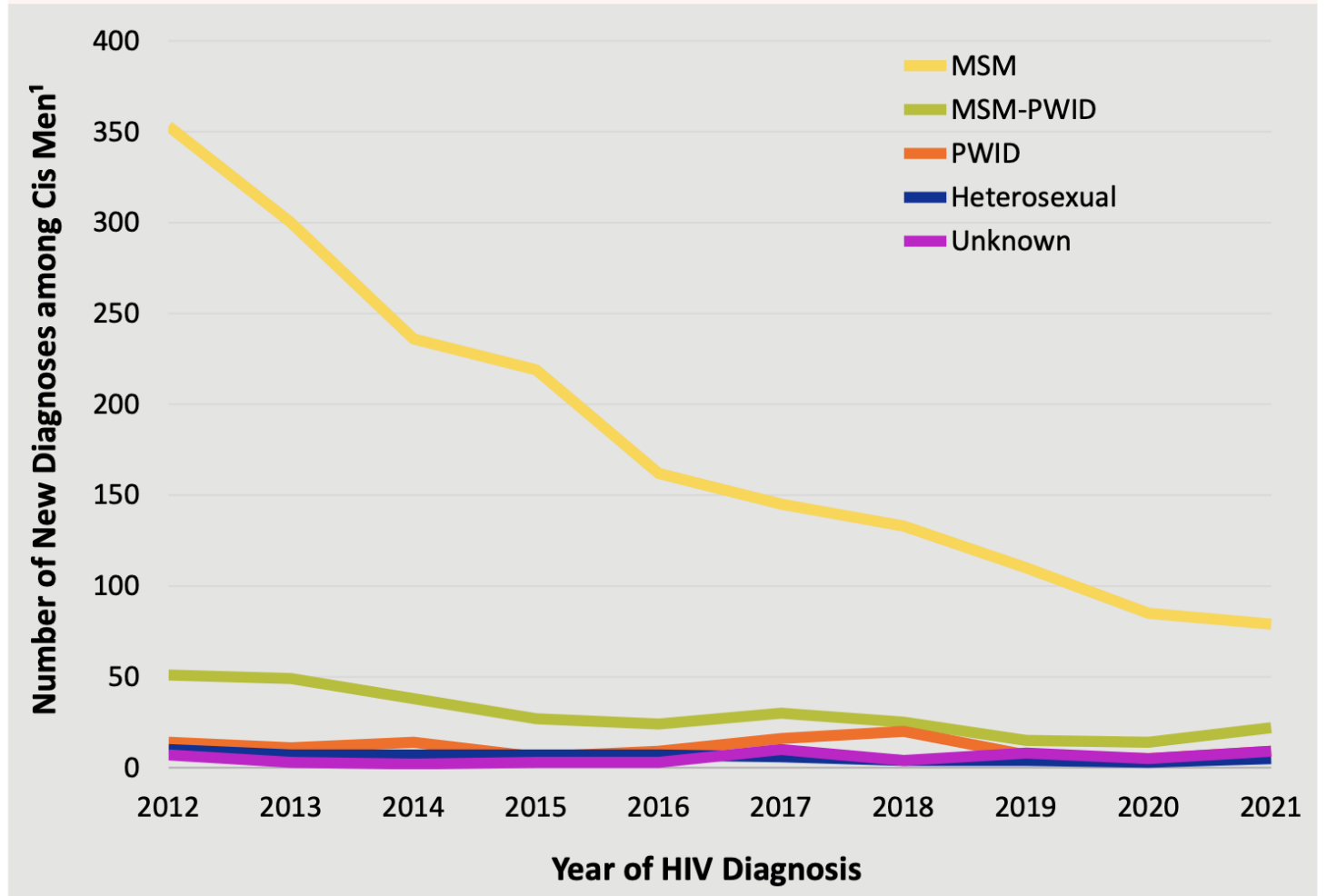
Intergration and Collaboration



POPULATION HEALTH DIVISION
SAN FRANCISCO DEPARTMENT OF PUBLIC HEALTH

HIV Rates Not Declining Evenly

Figure 2.4 Number of cis men newly diagnosed with HIV by transmission category, 2012-2021, San Francisco



1 Includes people with HIV by year of their initial HIV diagnosis.



SF Populations of Focus

People living with and at risk for HIV, HCV, STIs

- Black/African Americans
- Latinos/Latinas/Latinx
- Trans Women
- People Who Use Drugs
- People Experiencing Homelessness
- People with incarceration experience
- Youth and young adults
- Aging population living with HIV

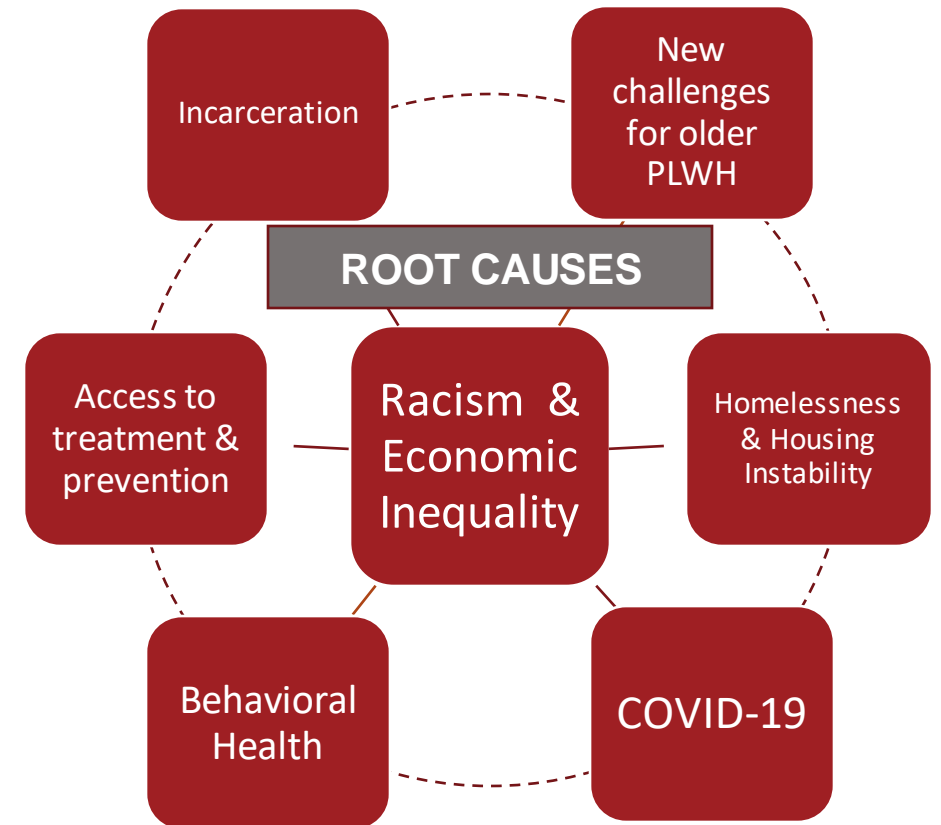


SF Approach, "De-silo" HIV/HCV/STI and Overdose Syndemics and Cross Cutting Themes

Root Causes: Structural Racism, and Economic Inequality

Cross-Cutting Issues

- Homelessness and Housing Instability
- Behavioral Health
- Access to Treatment and Prevention
- New Challenges for Older PLWH
- Incarceration



Funded Efforts that Would Encourage Integration and Coloration

- Need to provide more wrap around services
 - Peoples have core needs that need to be met before
 - Mental Health, Food, Housing, ect.
- Intersectionality
 - My identity, mixed race, (German, Mexican, Native) gay and disabled
 - Clients have options



Some Examples ETE

- Workforce Development (CHILi)
- FOG, Frontline Organizer Group)
- 6 Community Advisory Programs, CAPs
- Good Sex Campaign
- Home Testing



POPULATION HEALTH DIVISION
SAN FRANCISCO DEPARTMENT OF PUBLIC HEALTH

Partnered
with HHS

(Status
Neutral
Services)

SFAF Contingency Management

Jail Health Services

Gender Health Services

Ward 86 PrEP



POPULATION HEALTH DIVISION
SAN FRANCISCO DEPARTMENT OF PUBLIC HEALTH

CDC ETE funding: SF Award FY20

Prevention dollars (CDC)

- CDC PS-20-2010: “Integrated HIV Program for Health Departments to Support Ending the HIV Epidemic in the United States”
- 5 years starting August 1, 2020
- \$2.7 million per year (+)
 - Comp A: \$2,290,288 – **Community Health Equity & Promotion** (CHEP), DPH
 - Comp C: \$850,000
 - **Project Expand and Elevate (ExEI)** will enhance and expand integration of STI and HIV prevention care services

San Francisco Approach Coordination / Communication



POPULATION HEALTH DIVISION
SAN FRANCISCO DEPARTMENT OF PUBLIC HEALTH

Many Networks but Don't Connect



Other Future Partners

21

Expanded services for people experiencing homelessness	Enhanced psychiatric consultation	Expanded CoE & Non-CoE community-based services
Expanded mental health services	Expanded administrative support for HIV Health Services	Augmented post-incarceration navigation
Enhanced and expanded Intensive Case Management (ICM) programs	Expanded housing case management	Innovative status-neutral access points
Innovative Black & African American service delivery programs	Expansion of Primary Medical Care during off hours and weekends	Expanded street-based services
Tele-psychiatry support	LINCS (Linkage, Integration, Navigation Comprehensive Services)	Expansion of peer to peer support
Peer support to HIV-positive Trans Women	Long-term injectable ART	Additional stabilization rooms

Staffing / Roles

- Stephanie Cohen, PI
- Patricia Erwin, CHEP Director
- Thomas Knoble, Manager
- Emily Valado, CAPs

San Francisco Structure



EXISTING



SF HIV FOG

BAAHI



SF.GOV

What is the role of the ETE SC?

- Strategic planning
- Community leadership
- Collective Impact
- Resource & information sharing

IN PROGRESS

Community
Advisory
Processes
(CAPs)

Workforce
Development:
Community
Health
Leadership
Institute
(CHLI)

FUTURE POSSIBILITIES

Racial Equity
Working Group

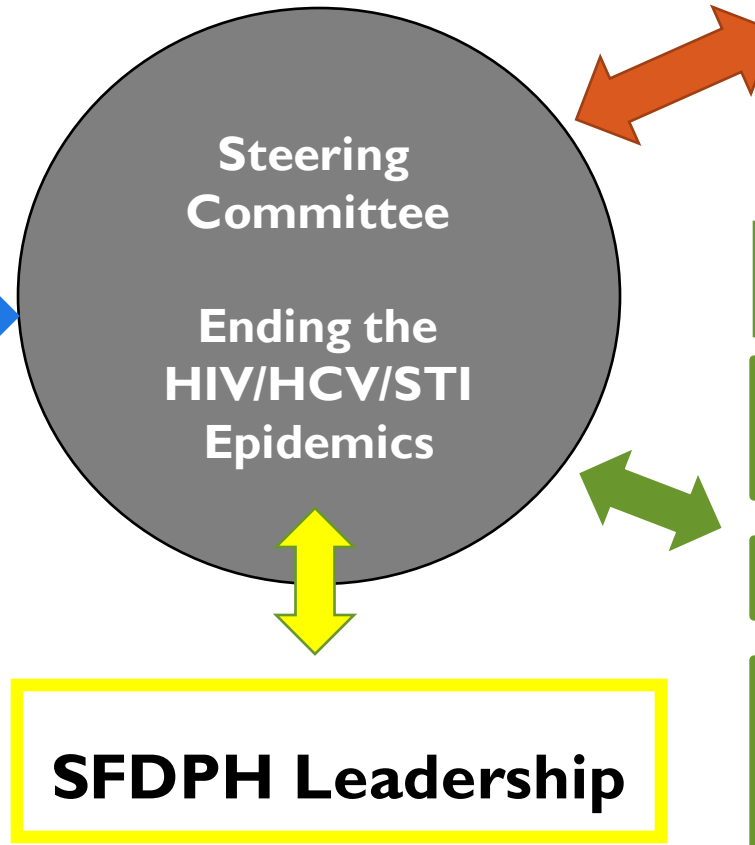
Incarceration

Regional Work

STI Task Force

Data,
surveillance,
clusters

Housing and
Homelessness:
HIV and
Housing
Working Group



POPULATION HEALTH DIVISION
SAN FRANCISCO DEPARTMENT OF PUBLIC HEALTH

Office of Transgender Initiatives

OTI works with community and the City to advance equity for transgender and gender nonconforming people.

SF Meeting Structure

- CAPs Every 2 Month Meeting (50K each)
- Steering Monthly Meeting
 - Represent exiting networks
 - Share out and provide guidance
 - Problem Solving
- DPH Monthly Leadership Meeting
 - DPH Coordination
 - Budget Coordination
 - Citywide Planning





Develop regional PrEP approach

Social marketing campaign and other efforts in partnership with Alameda County and CBOs

Questions?

